



LinkOne WebView Getting Started Guide

Version 3.29

LinkOne WebView Getting Started Guide

Version 3.29

Contents

1 Overview	4
2 System Requirements	4
2.1.1 Requirements for LinkOne WebView Servers:	4
2.1.2 Minimum Requirements for LinkOne WebView Clients (Online):	4
2.1.3 Minimum Requirements for LinkOne WebView Clients (Offline):	5
2.1.4 Minimum Requirements for Advanced Search:	5
3 Licensing	5
4 Viewer Differences	6
5 Installation	6
5.1 Prerequisites Install	7
5.2 LinkOne WebView Install	8
5.3 Post Installation Configuration	12
6 Operation	13
6.1 User Login	13
6.2 User Profile	13
6.3 Book Browsing	14
6.4 Viewing Books	14
6.4.1 Viewer Layout	14
6.5 Filtering Content	17
6.6 Searching	17
6.7 Advanced Search Facility	18
6.8 Creating Notes	18
7 Administration	19
7.1 Administrator Login	19
7.2 Server Management	20
7.2.1 Site Licenses	20
7.2.2 Concurrent Licensing	20

STATUS	SECURITY LEVEL	DOCUMENT ID	REV.	LANG.	PAGE
Approved	Public		A	en	2/29

7.2.3	Reports	21
7.3	Reporting	21
7.3.1	Login Activity.....	21
7.3.2	User Activity.....	21
7.3.3	Book Activity	21
7.4	Advanced Search Facility	22
7.5	Book Change Notification	22
7.6	User Management	23
7.7	Role Management	24
7.8	Library Management.....	24
7.9	Note Management	25
7.10	Selection List Management	26
7.11	Assigning Security Keys	26
7.12	Assigning Book Access.....	26
7.13	Assigning Note Access	27
7.14	Assigning Policies.....	28
8	Additional Information	28
8.1	Listing of related documents.....	28

STATUS	SECURITY LEVEL	DOCUMENT ID	REV.	LANG.	PAGE
Approved	Public		A	en	3/29

1 Overview

In this document, you will find information on getting started with LinkOne WebView, including installing the software, configuring LinkOne book libraries for viewing in a browser, and operating the book viewer with filters and searches. Administration of the web site is also included, covering security with users, roles, and policies, as well as managing access levels to LinkOne book content.

Further details on the documentation can be found in the Additional Information section at the end of this document.

If you need further guidance and support, contact your LinkOne reseller or **Enterprise Software Global Customer Care** (if you purchased LinkOne directly from Hitachi Energy) via the **Customer Portal** (<https://www.hitachienergy.com/>) or via **email** (<mailto:CustomerCare.ES@hitachienergy.com>).

2 System Requirements

2.1.1 Requirements for LinkOne WebView Servers:

- One of the following operating systems:
 - Microsoft Windows 2012 Server
 - Microsoft Windows 2016 Server
 - Microsoft Windows 2019 Server
 - Microsoft Windows 2022 Server
 - The following are supported for non-production use only.
 - Microsoft Windows 11
 - Microsoft Windows 10
- Microsoft .NET Framework 4.6 (for WebView)
- ASP .NET 4
- Microsoft IIS 7, 8 or 10
- Microsoft SQL Express 2008 or later
- Microsoft SQL Server 2008, 2012, 2014, 2016, 2017.
- 4GB of RAM
- 200 MB of available hard disk space (plus space for any LinkOne books and notes)

2.1.2 Minimum Requirements for LinkOne WebView Clients (Online):

The following versions of the supported browser have been actively tested during the development of LinkOne Web-View 3.29. Other versions of the supported browsers may operate but any issues may be rectified at Hitachi Energy's discretion.

Operating System	Supported Browser	Version
Microsoft Windows 11, 10	Internet Explorer	11, Edge
Microsoft Windows 11, 10	Google Chrome	Current version at time of release testing of LinkOne Web-View 3.29
Microsoft Windows 11, 10	Firefox	Current version at time of release testing of LinkOne Web-View 3.29

STATUS	SECURITY LEVEL	DOCUMENT ID	REV.	LANG.	PAGE
Approved	Public		A	en	4/29

Apple OSx	Safari	5.0.5
Apple iOS	Safari	Current version at time of release testing of LinkOne Web-View 3.29
Google Android	Chrome	Current version at time of release testing of LinkOne Web-View 3.29

NOTE: 3D Model viewing is currently only supported on Internet Explorer 11 and Firefox.

2.1.3 Minimum Requirements for LinkOne WebView Clients (Offline):

The LinkOne WebView Offline client is a Progressive Web Application (PWA) that utilise Service Workers technology provide by most recent web browsers.

At the time of release, the following were known to be the minimum browser versions:-

Chrome - 45

Edge - 17

Firefox - 69

Safari on iOS - 11.3

Chrome for Android - 96

Note: Service worker technology is not supported by Internet Explorer.

The following website can be used for general information on compatibility between Service Worker technology and browser versions : <https://caniuse.com/serviceworkers>

The storage requirements will depends directly on the content that is being downloaded. Where the browser supports it, the Offline Delete page includes a graph to indicate that stoage available to the browser.

2.1.4 Minimum Requirements for Advanced Search:

- Advanced Search Facility is supported by using a SOLR Server
- SOLR index Hard Disk space varies but as a guide, space equivalent to the size of the LinkOne libraries is required.

3 Licensing

LinkOne WebView requires a license before it can be used. Without a license, only a single user from a single browser is permitted.

A license may be obtained through an authorized LinkOne reseller or by contacting Hitachi Energy directly by emailing **LinkOne Administration** (mailto:linkone_admin.PGES@hitachienergy.com).

A license is locked to the URL of the LinkOne WebView web site. Once LinkOne WebView is installed, login as an administrator, and navigate to **Configuration > Site Licenses** where the web site URL is shown. Use this URL when requesting a license.

Users of LinkOne WebView 1.x and 2.x will require a new license to operate LinkOne WebView 3.x. Users with a li-cense from any 3.x version of LinkOne WebView will be able to re-use their license with this release.

STATUS	SECURITY LEVEL	DOCUMENT ID	REV.	LANG.	PAGE
Approved	Public		A	en	5/29

4 Viewer Differences

Whilst LinkOne WebView can serve as a replacement for LinkOne WinView, not all functionality available in LinkOne WinView is available in LinkOne WebView. The table below outlines the known differences between the two programs, and what features provided in LinkOne WinView are available in the WebView product.

Feature	WinView V5.x	WebView V3.x
Publisher Linked License Required	Yes	No - functions as an Open Viewer
View Draft Books	Yes	Yes (from 3.20 onwards)
Save Search Results	Yes	No
Program Notes	Yes	No
Printing	Yes	Yes - for the viewed page/book when the Publisher allows it (NB in the case of book printing, see the 3.4 Release Notes for changes to the config file to enable printing)
Dynamic Derived Books	Yes	No
OCI Selection list	No - requires plugin	Yes
Access control	Yes - using security keys	Yes - using security keys and user authentication
Viewer Customization	Yes - using schemes	Yes - using themes
Embedded PDF Links	Yes	No - use HTML for embedded LinkOne links
LinkOne Links	Yes	Yes - LinkOne: protocol is required

5 Installation

LinkOne WebView 3.25 Beta can be installed using a number of different methods. This section guides you through the most commonly used method. For other methods, see the LinkOne WebView Technical Reference.

Use the LinkOne WebView installer application to install LinkOne WebView on your system.

Before installing, the LinkOne WebView installer will check your system for all features required to run. These features are:

- Microsoft .NET Framework 4
- Microsoft IIS 7 or above
- Microsoft SQL Express 2008 or later. **Note:** When using SQL Server rather than SQL Express, the installer must be run with the **VERSIONSQLSERVER** option. Please refer to the Installation section of the LinkOne WebView Technical Reference for more information

These components are all free from Microsoft, and are either pre-installed with Windows, or available for download from the Microsoft Web site.

STATUS	SECURITY LEVEL	DOCUMENT ID	REV.	LANG.	PAGE
Approved	Public		A	en	6/29

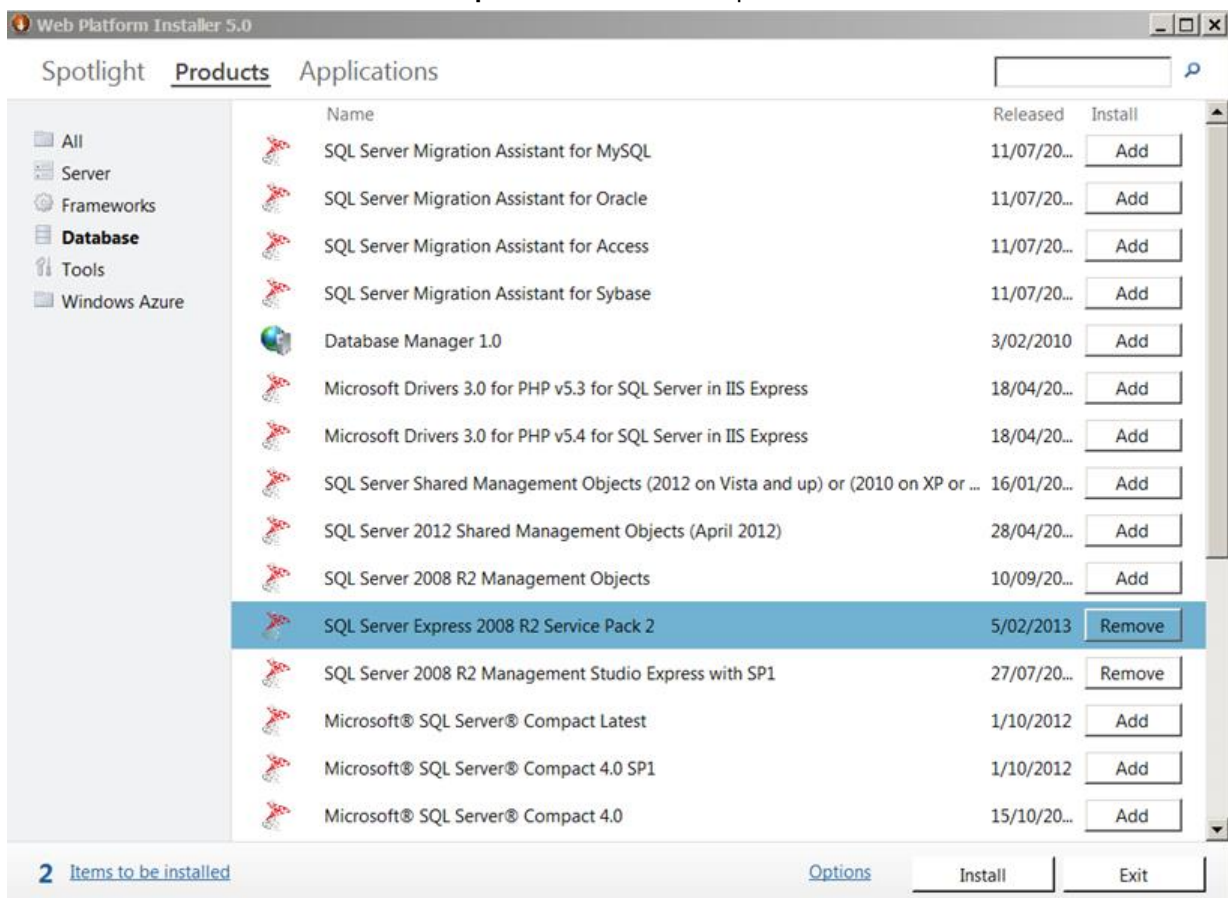
Note: LinkOne WebView is a 32bit web application which can be installed on 64bit versions of supported Windows operating systems.

5.1 Prerequisites Install

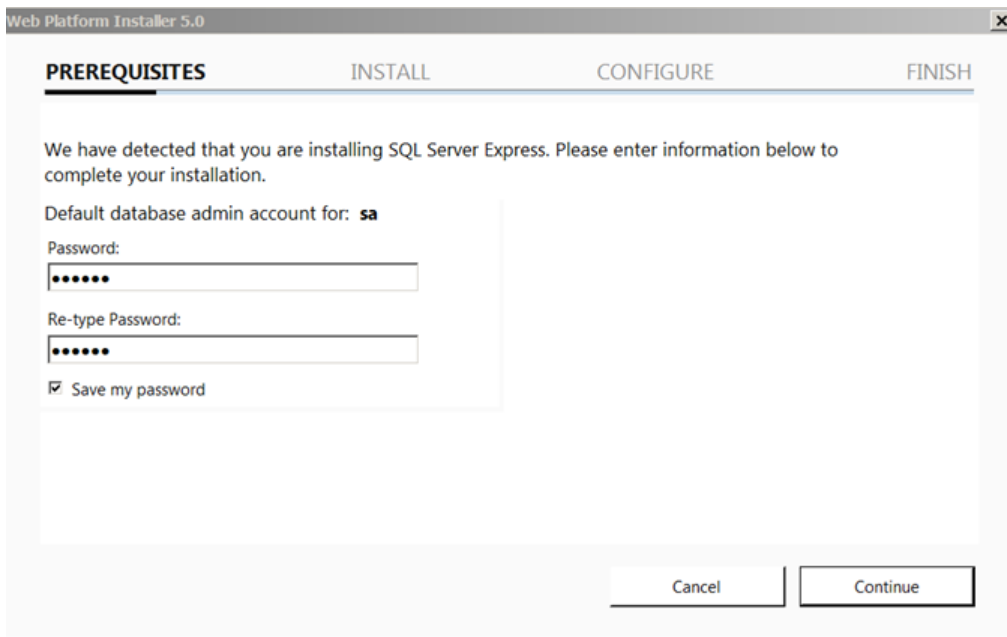
Ensure all prerequisite features are installed and up to date by using the Microsoft Web Platform Installer with the following steps.

NOTE: Sometimes, the Microsoft Web Platform Installer may not supply all the prerequisites, for example-SQL Server. You may have to download/install SQL Server or SQL Server Express Manually.

1. Download and run the Microsoft Web Platform Installer from the **Microsoft Web Platform** (<http://www.microsoft.com/web/downloads/platform.aspx>) Web site.
2. Select the recommended products from **Web Server, Frameworks and Runtimes**, and **Database** by clicking the **Click to include the recommended products** for each component. Click **Install**.



- If SQL Server Express is to be installed, you will be asked to choose an authentication type. Select Windows Integrated Authentication. Click **Continue**.



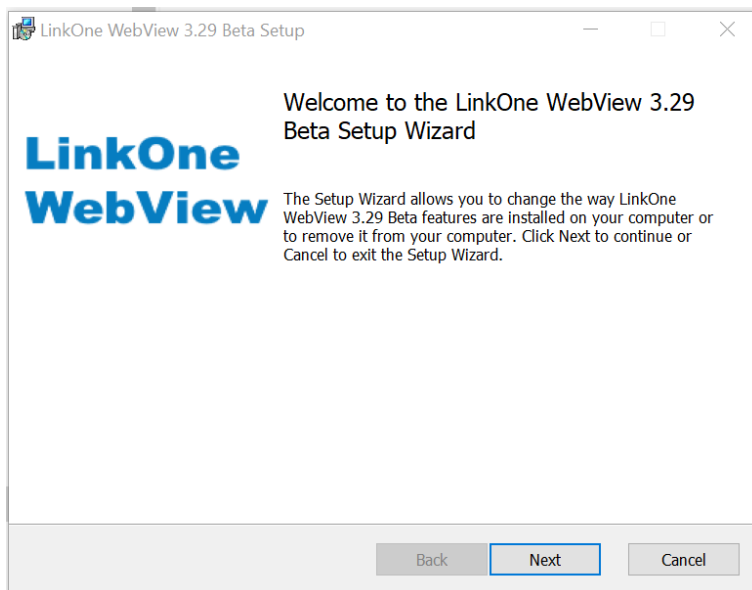
- The installation will now start, and you may be asked to restart to continue. After any restart, log in, and the installation will continue automatically.

Once installation has completed, close the Web Platform Installer and start the LinkOne WebView Installer. If you are on Server 2008 please make sure that the Web Server Role has been installed AND that the ASP.NET Role Service has been installed.

5.2 LinkOne WebView Install

- Double-click the LinkOne WebView installer application to launch the installation wizard. The wizard then examines your system configuration.

If your system meets all necessary requirements, the welcome window displays. Click **Next** to begin installing LinkOne WebView.



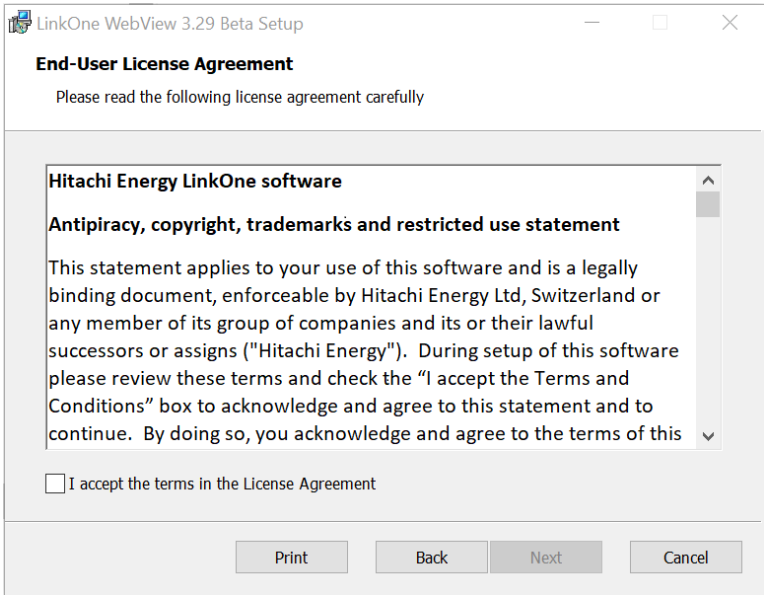
- If you get an error message indicating that you need to install Asp.Net 4 and it is already installed, you need to register Asp.Net 4 by opening a command window and running the command

STATUS	SECURITY LEVEL	DOCUMENT ID	REV.	LANG.	PAGE
Approved	Public		A	en	8/29

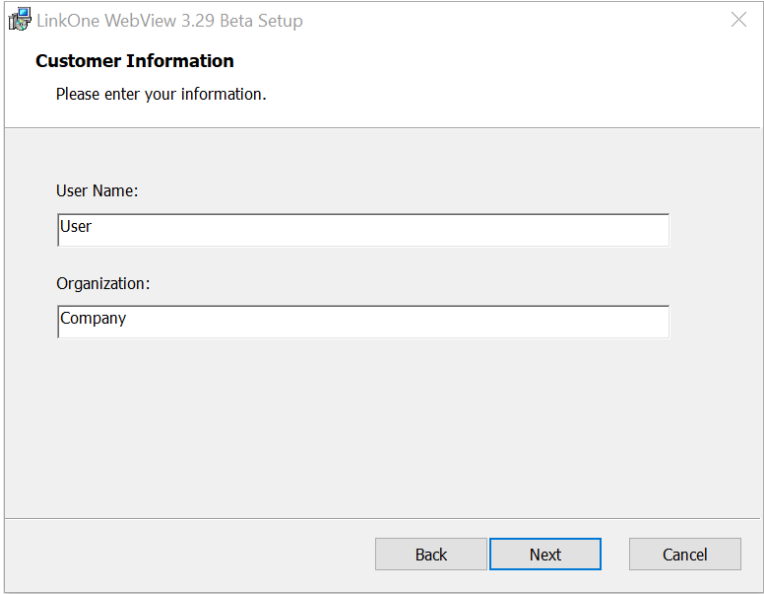
- aspnet_regiis -i

from the appropriate directory, for example c:\Windows\Microsoft .NET\Framework\v4.0.30319

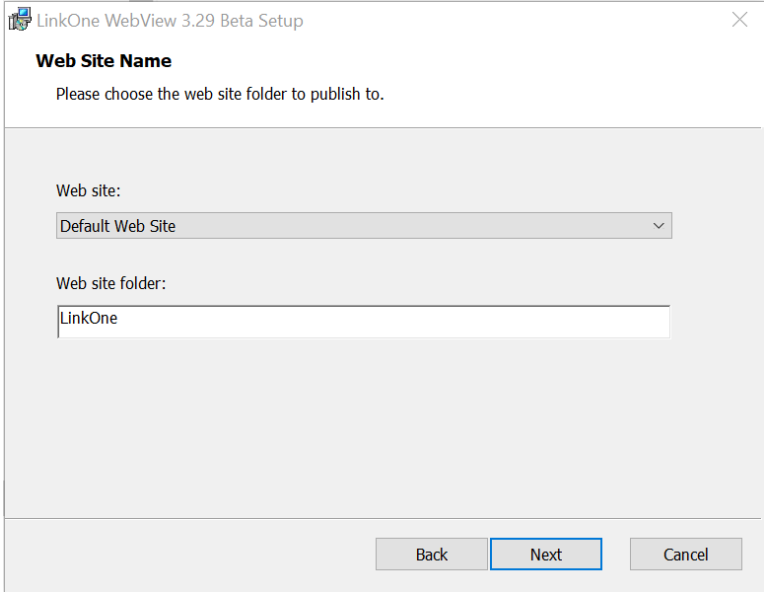
3. You must read and accept the software license agreement before you can install LinkOne WebView. Select the option to accept the license agreement. Click **Next** to continue.



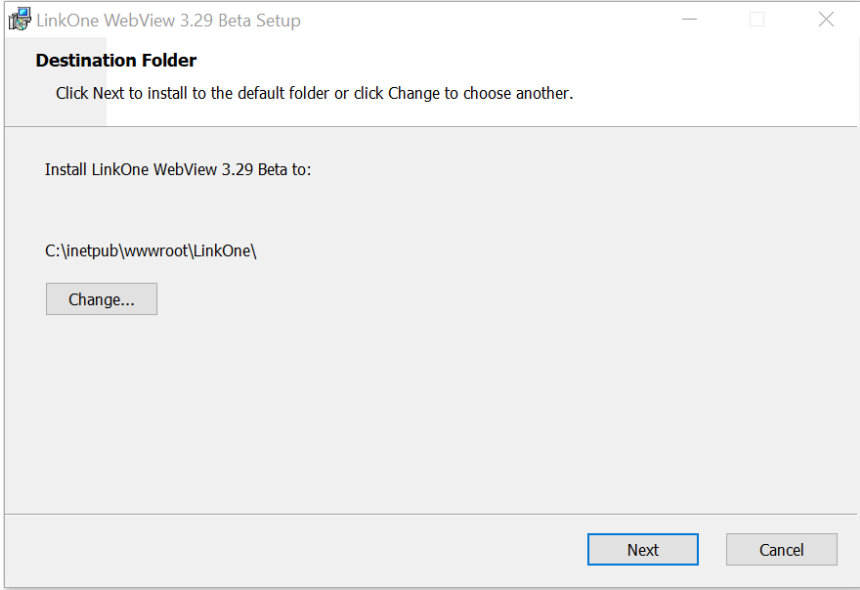
4. Enter the user name and organization for the primary owner of LinkOne WebView. Click **Next** to continue.



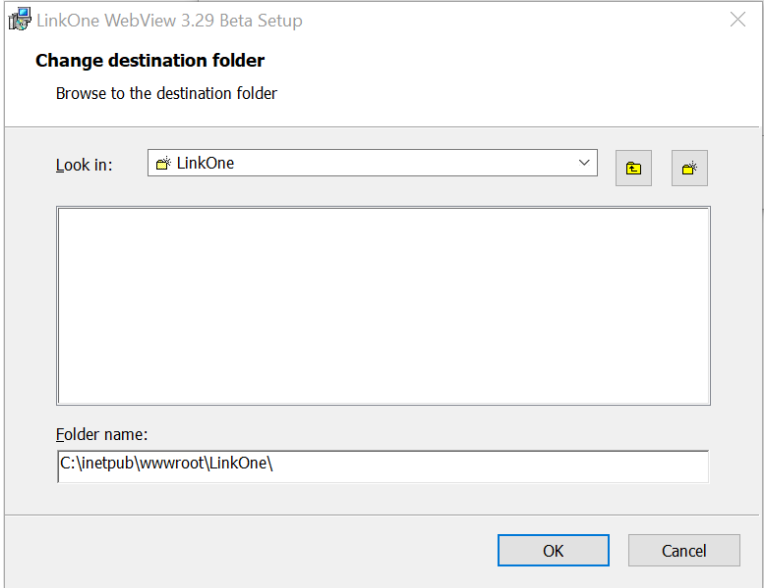
- 5. Select an installation Web site. Select a root Web site from the list of available Web sites on the server. Then enter a unique name for the Web site folder. The sample shown will resolve to http://localhost/linkone. Click **Next** to continue.



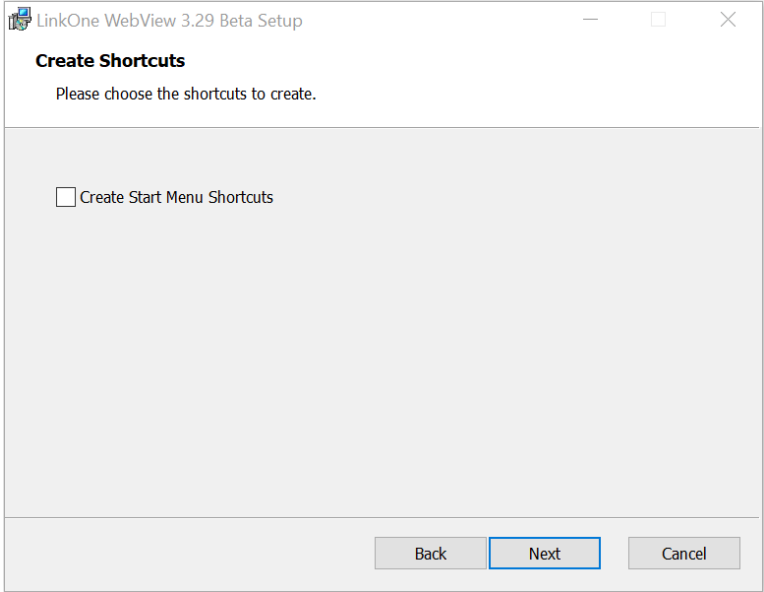
- 6. The default installation folder shown is resolved from the folder of the selected Web site, and the Web site folder you entered in the previous step. To change the location of where the files are installed, click **Change** and refer to next section. Click **Next** to continue.



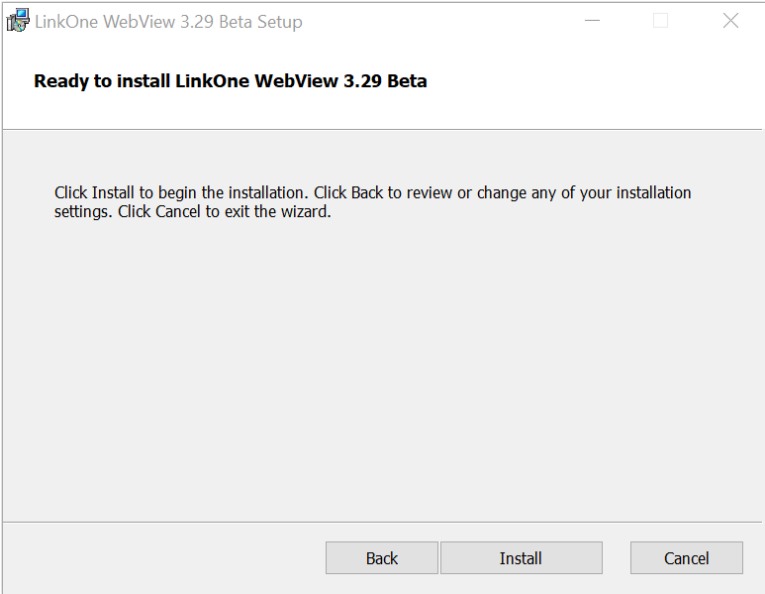
- 7. You can change the default destination folder by navigating to the required location. Press **OK** when the selected location is determined or **Cancel** if the current location is to be kept. The display will return to the previous screen as shown in section 6 above.



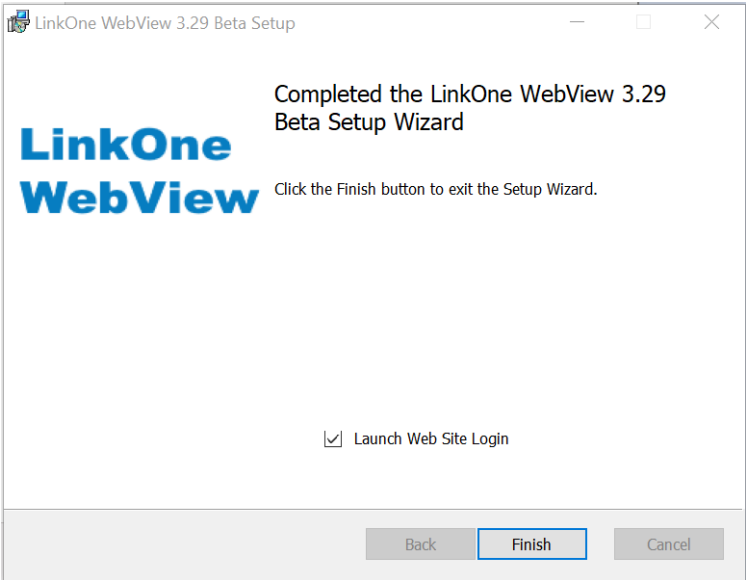
- 8. Once installed, the only access to LinkOne WebView is through a web browser pointed at the address chosen in step 5. You can select **Create Start Menu Shortcuts** and install a shortcut on the Start menu that launches a browser at that address. Click **Next** to continue.



9. Click **Install** to commence installing LinkOne WebView with the options you selected.



10. After the installation is complete, click **Finish** to close the installation wizard. If you want the web site to launch, leave the check box ticked.



5.3 Post Installation Configuration

After you have installed WebView, there are a number of tasks that must be performed prior to running WebView, for example enabling HTTPS.

These tasks are described in the **Walkthroughs** section of the **LinkOne WebView Technical Reference**. Please review these sections to determine which are applicable to your situation.

Note: If you installed onto **Windows Server 2012** and users are receiving the error "**Could not load picture data from server**", please check that **HTTP Activation** is installed. This can be done from the **Add Roles and Features Wizard** by selecting "**Features/.NET Framework 4.5 Features/WCF Services/HTTP Activation**"

Note: If you are installing onto a machine running **IIS 7** and the background image does not appear on the login page, you will need to modify web.config. This task is described in the **Walkthroughs/How to Configure IIS 7** section of the **LinkOne WebView Technical Reference**.

STATUS	SECURITY LEVEL	DOCUMENT ID	REV.	LANG.	PAGE
Approved	Public		A	en	12/29

6 Operation

6.1 User Login

Users are required to login to LinkOne WebView for the purpose of licensing and to identify the books that are allowed to be viewed.

Log in to the web site using the site address chosen at installation, for example **http://localhost/linkone** if you are browsing on the same server that LinkOne WebView was installed on. During installation a shortcut may have been created on the Start Menu that takes the user directly to the login page.

A single user login account is created during the installation. If this account has not been changed, its credentials are:

- **User Name:** user
- **Password:** user

Additional login fields are shown by clicking the login panel title bar. These login fields can be left at their default values, or they can be set to preferred values for starting the session.

- **Book Language:** Select the language of the viewed book content. If the book has no content in that language, then the book default language is shown.
- **Web Site Theme:** Select the colour theme for the Web site. Two themes are created at installation time.
- **Selection List:** This chooses the selection list type for the session from the list of configured selection list types.
- **Selection List Name:** Choose the selection list name for the session, which is where any selected parts are stored. This is the same as using the **Save As** menu entry when viewing a book.
- **Show Superseded Entries:** This acts as a filter of the book content to show superseded parts list entries. This option only has an effect if the book publisher has included superseded parts in the book.

When you login, the Browse Books web page displays all LinkOne books that are available to view. The menu also shows choices to view the current user profile, and to show the online help.

As part of the initial configuration, it is recommended that the password for user name user is modified from the delivered password

6.2 User Profile

The **My Profile** web page is a private page for each user allowing them to change their passwords and let them view and manage any private selection lists that they have saved.

If a user changes their password on their My Profile page, the new password must conform to the password strength requirements of the Web site.

The selection lists shown on this page are the private selection lists for the selection list type selected when the user logged in.

6.2.1.1.1 Tasks

To delete a selection list, click **Delete** next to the unwanted entry. A prompt will display confirming the delete request. Click OK to delete.

To delete a part from a selection list, click a selection list to show the parts, and then click **Delete** next to the unwanted part.

To jump to a part view, click a selection list to show the parts, and then click a part to navigate to the book view.

STATUS	SECURITY LEVEL	DOCUMENT ID	REV.	LANG.	PAGE
Approved	Public		A	en	13/29

6.3 Book Browsing

All books that the current user can open are displayed on the **Browse Books** web page. The books are organized in hierarchical folders, starting with book publishers at the top level. Clicking on a publisher folder expands that publisher to show book category folders and books for that publisher.

The Web site administrator chooses which books can be seen by a user.

When a book is opened, any licenses required to open the book are checked against the licenses assigned to you. *Security Key Required* displays if no correct license is found.

6.4 Viewing Books

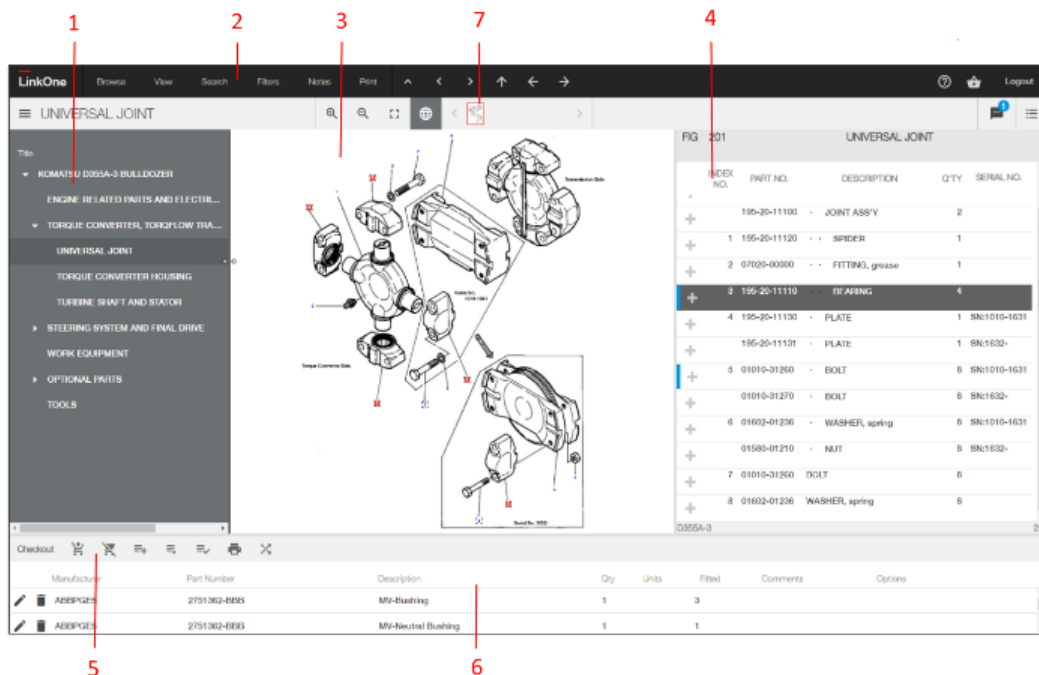
To view a book, navigate to **Browse Books**, and select a book from the list of available books. The main book viewing web page opens and displays the opening page set by the publisher.

When viewing a book, the content can be:

- Navigated using the menu or the Table of Contents.
- Selected into the Selection List for ordering.
- Filtered to show only relevant information.
- Searched to locate parts or pages.
- Printed in the publisher defined format.
- Annotated with notes for additional information not found in the book.

6.4.1 Viewer Layout

When you open a book the main book viewing web page displays.



The panels in the book viewer are:

1. Table of Contents Panel
2. Book Menu
3. Pictures Panel

STATUS	SECURITY LEVEL	DOCUMENT ID	REV.	LANG.	PAGE
Approved	Public		A	en	14/29

4. Parts List Panel
5. Selection List Menu
6. Selection List Panel
7. Picture Menu

The initial page which is viewed when you open a book, is set by the book publisher. To open another page, either click directly on a page in the Table of Contents, or click on the **Next Page**, **Previous Page**, or **Parent Page** buttons (the blue and white buttons). The content of each page is also set by the book publisher, and occupies the Pictures and Parts List panels on the right side of the book viewer.

6.4.1.1.1 Tasks

To hide or show any of the panels, click on **View** and then click on **Contents**, **Pictures**, **Parts**, or **Selection List**.

To resize a panel, drag the divider adjacent to the panel being resized to the desired location and release it.

To restore panel sizes, click **View > Reset Layout**.

6.4.1.2 Table of Contents Panel

The Table of Contents panel is docked on the left of the book viewer page. To toggle the panel on or off, click **View > Table of Contents**.

The table of contents shows the full hierarchy of pages found in the book, excluding any filtered-out pages. Each page is listed with its title, page number, and page reference (the page reference is hidden if all references match their page numbers). Click on a parent page to expand that page to show its child pages.

6.4.1.2.1.1 Tasks

Click on a page to navigate to that page directly. You can also click on **Next Page**, **Previous Page**, or **Parent Page**.

6.4.1.3 Pictures Panel

The Pictures panel is docked in the middle of the Book viewer web page. The panel expands to fill the Parts List panel when no parts are present for the viewed book page. The panel collapses when no pictures are present for the viewed book page.

Hover over the picture with the mouse pointer to display a toolbar. To pin the toolbar click the **Pin / Unpin** icon.

6.4.1.3.1.1 Tasks

To zoom on the picture either:

- Scroll the mouse wheel when hovering over the picture.
- Click the **Zoom In**, **Zoom Out**, or **Zoom Fit** icons.
- Click the Zoom Mode icon, then press the left mouse button, drag and release the mouse on the picture to perform a rubber band zoom.
- Click the Pan Mode icon, press the **CTRL** key down, press the left mouse button, and drag and release the mouse on the picture.

To pan the picture when it is zoomed in, either:

- Click the Pan Mode icon, then click and drag the mouse on the picture.
- Click the Zoom Mode icon, then press the **Shift** key down and click and drag the mouse on the picture.

Double-clicking on a callout on the picture adds the associated part to the selection list. Additional clicks on the callout increase the quantity of the part in the selection list.

To select a different picture found in the page, click **Next Picture** or **Previous Picture** or choose from the list of available pictures. These tools will be disabled if only one picture is on the page.

STATUS	SECURITY LEVEL	DOCUMENT ID	REV.	LANG.	PAGE
Approved	Public		A	en	15/29

6.4.1.4 Parts List Panel

The Parts List panel is docked to the right of the book viewer page. This panel can also expand to fill the Pictures panel when no pictures are present for the viewed page, or it can collapse when no parts are present for the viewed page.

The type of content shown by the parts list is set by the publisher, but is usually either:

- A list of parts, with each part associated with a callout on a picture.
- A PDF document.
- An HTML document.
- An XML/XSL document.
- An external Web site

The layout of the parts list is set by the book publisher. If the publisher has allowed other layouts to be chosen, view these layouts by clicking **View > Preferences** and selecting a new **Screen Layout**.

Click on the shopping basket icon in the parts list to add the adjacent part to the selection list. Additional clicks on the shopping basket will increase the quantity of the part in the selection list.

In separate panels above the parts list are:

- **Related Pages** - A list of pages related to the current page (if any exist). Click a related page to jump to that page.
- **List Notes** - A list of notes flagged as List Notes. Click a note title to show that note.

6.4.1.5 Selection List Panel

The Selection List panel is docked at the bottom of the browser, and lists all parts that have been selected from the Parts List or Picture. The columns that display and the menu functionality are based on the type of selection list chosen at log in. The administrator controls which columns display for each selection list type, and which parts list fields are mapped to which columns when a part is added. For more information, see the *LinkOne WebView Technical Reference*.

6.4.1.5.1.1 Tasks

To add a part to the selection list, either:

- Click the shopping basket icon in the parts list that is next to the wanted part (a part will only have a shopping basket icon if it satisfies the selection criteria. See the *LinkOne WebView Technical Reference*);
- Double click a picture callout;
- Click **Add Blank** if available with the selection list chosen at login, and enter the required fields.

To delete a part from the selection list, click **Delete** next to the unwanted part.

To modify the quantity of a part in the selection list, either:

- Add the part again to increase the quantity;
- Directly modify the quantity by clicking **Edit** next to the relevant part, update the quantity and click **Save**.

To order the selection list by a specific column, click the column title. This will cycle through ascending, descending, and added order.

To save the selection list with a new name, click **Save As**, and enter a new name.

To open a saved selection list, click **Selection Lists**. Select from the list of available names.

To delete a saved selection list, click **Selection Lists**. Click **Delete** next to the unwanted selection list.

STATUS	SECURITY LEVEL	DOCUMENT ID	REV.	LANG.	PAGE
Approved	Public		A	en	16/29

6.5 Filtering Content

A book can contain information for a range of models, versions and variants of a piece of equipment. If the book publisher has set options for a book, those filters hide irrelevant information, so that only the needed information is displayed.

To filter information, specify the option values that are relevant for the wanted content (for example, the serial number, torque converter and cold-weather variant). LinkOne WebView will then hide any data that is not relevant to the selected filters.

For example, for a piece of equipment that has a serial number of 20013 and is part of a cold-weather model, you could define two filters:

- The Serial Number option with a value of "20013".
- The Cold Weather option (if this was defined by the publisher) with the value "ON".

Any page content marked as being only for serial numbers other than "20013", or marked as being only for non-cold-weather models is hidden. Content that does not have the option you specified a value for, is still visible.

If a page is hidden as a result of filtering, the page title is not displayed in the Table of Contents panel. The page and any of the entries on the page will not be found in any search. Any links on other pages that link to the hidden page are also hidden.

The publisher can tag pages or parts with several different filter options, or more than one instance of the same code. For example, a part that is relevant to three different serial numbers, or to two different possible cold weather options. When there are several instances of the same option for a part, you only need to match any one of them in your filter for the content to display. Filtering does not work if the publisher has not placed option codes in the book.

6.5.1.1.1 Tasks

To apply a filter to the current book:

1. On the book viewer page, click **Filters > Temporary**. The Temporary Filters window displays.
2. Enter the filter value for the wanted option. Click **OK** to close the window and apply the filters.

To apply a filter to the current viewed book permanently:

1. On the book viewer page, click **Filters > Permanent**. The Permanent Filters window displays.
2. Click **New Permanent Filter**.
3. Enter the wanted filter value and option.
4. Select the **Access** level for who should have the filter applied.
5. Select the **Location** level for where to have the filter applied.

6.6 Searching

You can use LinkOne WebView to locate information in a LinkOne book by searching for data such as page titles, part descriptions, or part numbers.

When matching search values to data in the book, the book search engine typically ignores punctuation, spaces and other characters defined by the book publisher. A publisher, however, may specify that punctuation or spaces are allowed in a particular search value. Bracketed text in descriptions is usually not found by searches. Again, the publisher controls this behaviour.

6.6.1.1.1 Tasks

To perform a LinkOne WebView search:

- On the book viewer page, click **Search**. The Search window displays.
- In the **Search With** field, select the type of search you want to use. If additional searches have not been defined by the book publisher, then only the default searches are available.

STATUS	SECURITY LEVEL	DOCUMENT ID	REV.	LANG.	PAGE
Approved	Public		A	en	17/29

- In the **Search In** field, select the range of data to search. The search can cover all books, or be limited to the current book or the current publisher. **NB** if the Advanced Search Facility is enabled, the ability to search all books is not available from here.
- In the field for the parameter on which to search (for example, the **Part Number** field), enter the value to search on. If the entire value is not known, a partial number can be entered. For example, 9901 can be used to find all part numbers starting with 9901.
- Click **Search**. The search results display in the right panel of the Search window, showing the exact text that was matched and details of the matching book and page.
- Click any of the listed results to display the entry details.

6.7 Advanced Search Facility

You can use the Advanced Search Facility (if it has been configured and enabled by the System Administrator) to locate information across multiple LinkOne books by searching for data such as page titles, part descriptions, or part numbers. The Advanced Search Facility replaces the multi-book search option in the WebView Search dialog. It is a high performance search relying on the LinkOne books being indexed before the Search is run.

You can only search on the books that the System Administrator has allowed you access to.

The Advanced Search Facility can be used as a Quick Search or as a Filtered Search. A Quick Search searches all books the user has access to and all fields in these books. The Filtered Search allows the search to be limited to all fields in specified books or specified fields in specified books.

6.7.1.1.1 Tasks

To use as a Quick Search:

- On the **Browse Books** page, type the search text into the **Library Search Text box** on the Menu bar.
- Click the **Search icon** (binoculars)
- The Advanced Library Search page will be displayed with the results of the search.
- Click any of the listed results to display the location of the search match.

To use as a Filtered Search:

- On the **Browse Books** page, click the **Advanced button** on the Menu bar.
- The Advanced Library Search page is displayed showing a list of Publishers and Books the user has access to.
- Select the Publishers/Books to be included in the search.
- Open the **Select Fields to Search** panel and type the text to search on against the relevant Field/s, **or**
- Open the **Search All Fields** panel and type the text to search on in the **Search All** box.
- Click the **Search icon** or **Search link** on the appropriate panel to execute the search
- The results will be displayed on the same page.
- Click any of the listed results to display the location of the search match.

6.8 Creating Notes

You can use LinkOne WebView to supplement book content with user notes. There are several types of notes that can be created, and each note can be assigned an accessibility level for restricting who can view the note. Each note can also be located anywhere, from the library for global viewing, down to an individual part for viewing anywhere that part is seen.

The Administrator defines who can create notes, where the notes can be created, and what language the note is created for.

The types of notes that can be created are:

STATUS	SECURITY LEVEL	DOCUMENT ID	REV.	LANG.	PAGE
Approved	Public		A	en	18/29

- Text Note - Write comments and extra information.
- Cross Reference Note - Create additional cross-reference links between pages.
- Bookmark - Mark a location in a book to return to.
- Hyperlink - Create a link to a URL.

The access level for each note can be:

- Public - Visible to anyone who accesses the book.
- Private - Visible to only the creator of the note.
- Supplied - Supplied notes are visible to anyone who can access the book.

The location of each note determines where the note is shown, and can be:

- Global - Shown on every page.
- Publisher - Shown when viewing any page in any book from the publisher.
- Book - Shown when viewing any page in the book.
- Page - Shown when viewing the page.
- Publisher Part - Shown on the part, everywhere in the publisher.
- Book Part - Shown on the part, everywhere in the book.
- Page Part - Shown on the part, everywhere on the page.
- Page Item - Shown on the item, on the page.

For more information on the functionality of each note type, the note access level, and the note location, click **Help > Help**.

If notes are visible for the page being viewed, then they are seen as menu buttons on the book web page. Click on a note menu button to display the associated note. A note can also be created to automatically display when the page or book is opened. For more information on when a note is shown, please see the online help guide by clicking **Help > Help**.

6.8.1.1.1 Tasks

To create a note:

1. Click **Notes > Notes**. The Notes web page displays.
2. Click the appropriate button for the type of note to create (for example to create a text note, click **New Text Note** .
3. Enter the note information in the empty fields.
4. For advanced settings, adjust the note behaviour, the note access, and the note location.
5. Set a note category to group the note menu button under a menu for the chosen category.
6. Set a language to display that note only for users logged in with that language.
7. Click **OK** to save the note, and make it appear on the book menu

7 Administration

Before using LinkOne Publisher, an administrator will configure the Web site with books to view, along with associated licenses, and accounts for users to login.

LinkOne Publisher is administered directly through the Web site, and allows full administration of user accounts, user roles, licenses, policies, accessibility, and book libraries.

7.1 Administrator Login

Administrators log in through the main Web site login page.

STATUS	SECURITY LEVEL	DOCUMENT ID	REV.	LANG.	PAGE
Approved	Public		A	en	19/29

A single administrator login account is created during installation. If this has not been changed, then the following credentials are available:

- **User Name:** admin
- **Password:** admin

All other login fields can be left at their default values.

Once logged in as administrator, several configuration menus are available that are only visible to users in the **Administrators** role. The administration functions available are described in the following sections.

As part of the initial configuration, it is recommended that the password for the admin user is modified from the delivered password. It is recommended that at least 2 users have the **Administrators** role.

7.2 Server Management

7.2.1 Site Licenses

A site license for one concurrent user is included with LinkOne WebView. New site licenses can be added at any time to increase this number, allowing more users to use the Web site concurrently.

A LinkOne WebView site license identifies:

- A single nominated site (the hosting URL) from which the LinkOne WebView Web site is served.
- The number of concurrent users permitted to simultaneously connect to the Web site.

Additional site licenses may be obtained from Hitachi Energy or your authorized LinkOne reseller. Use the site name identified under the list of site licenses when requesting any new licenses.

7.2.1.1.1 Tasks

To view all site licenses, log in as an administrator, and select **Configuration > Site Licenses**. All licenses are shown, including their licensed concurrent user count, their licensed URL to serve from, and any remaining time limit on the license.

To add a site license, enter your new license into the empty license field, and click **Add**.

To delete a site license, click **Delete** adjacent to the unwanted license. A prompt will ask you to confirm the request to delete the licence, Click Ok.

7.2.2 Concurrent Licensing

To accurately predict the concurrent user capacity required for a LinkOne WebView installation, you need to understand how LinkOne WebView defines a "concurrent user".

LinkOne WebView defines a concurrent user as a single active connection between a web browser and the LinkOne WebView web site.

When a LinkOne WebView session is established, a single concurrent user license is consumed. The license is held exclusively by that LinkOne WebView session until the session has been inactive for 15 minutes. After this time, the license is released, and becomes available for use by other LinkOne WebView sessions. If the session becomes active again after 15 minutes, it attempts to consume a new license.

The current session usage of the Web site is available for viewing by using the login report.

7.2.2.1.1 Tasks

To view the current license usage report, log in as an administrator. Navigate to **Reports > Login Statistics**.

STATUS	SECURITY LEVEL	DOCUMENT ID	REV.	LANG.	PAGE
Approved	Public		A	en	20/29

7.2.3 Reports

LinkOne WebView routinely logs activity, and also reports errors if any occur. How long these logs are kept, and where errors are reported to, is defined in the reporting configuration page.

7.2.3.1.1.1 Tasks

To view the reporting configuration, log in as an administrator. Navigate to **Configuration > Reporting**.

To choose a new folder for error report storage, enter a folder name, and click **Save**.

To choose the period of time log activity is kept, enter a new period, and click **Save**.

7.3 Reporting

7.3.1 Login Activity

The Login Activity report page at `~/Reports/LoginActivity.aspx` shows the total number of licensed tokens on the web site, and the currently used number of tokens. The chart shows the historical usage of tokens for the nominated period. All times are in the server time zone.

7.3.1.1.1 Tasks

To nominate a new chart period, enter the required date and time range and click **Refresh**.

Click on any of the predefined time periods to redraw the chart for that period.

Click on **Export** to download the time and tokens used in CSV format.

7.3.2 User Activity

The User Activity report page at `~/Reports/UserActivity.aspx` lists login and LinkOne page viewing activity for all users that logged in during a specified time. A login is defined as a new browser session, and a page view is defined as a change to a new page. All times are in the server time zone.

7.3.2.1.1.1 Tasks

To nominate a new list period, enter the required date range and click **Refresh**.

Click on any of the predefined time periods to re-list for that period.

Click on **Export** to download the logins and times in CSV format.

7.3.3 Book Activity

The Book Activity report page at `~/Reports/BookActivity.aspx` lists page usage and viewing activity for all books viewed during a specified time. The book is identified as its publisher code/book code. The page usage count is for all pages viewed, and not just unique pages viewed. All times are in the server time zone.

7.3.3.1.1.1 Tasks

To nominate a new list period, enter the required date range and click **Refresh**.

Click on any of the predefined time periods to re-list for that period.

Click on **Export** to download the books and times in CSV format.

STATUS	SECURITY LEVEL	DOCUMENT ID	REV.	LANG.	PAGE
Approved	Public		A	en	21/29

7.4 Advanced Search Facility

Before the Advanced Search Facility can be used, the libraries **must** be indexed. This is done by configuring and running the `~/bin/LinkOneBookIndexingService.exe` Windows Service on the web server in tandem with a **SOLR** server that manages the index data.

The LinkOneBookIndexingService indexes all the libraries specified in the **Services.BookService.Libraries** key found in the `~/Mincom.LinkOne.WebView.config` file.

Whenever any book in the libraries is changed, or a book is deleted, or a new book is added, the service will update the indexes.

See the LinkOne WebView Technical Reference for detailed instructions for setup and configuration of your system in order to support the Advanced Search Facility.

7.5 Book Change Notification

The Book Change Notification system can be configured to allow users to subscribe to receive emails when books change.

This functionality is facilitated by the "LinkOneNotificationService" Windows Service, which 'listens' to each configured library in WebView. As a result of the way this functionality must work, the service also requires write permissions to each library folder.

The Book Change Notification Service does not notify when changes occur to documents stored within SharePoint. For more information, please refer to the SharePoint Alerts section of the LinkOne WebView Technical Reference.

7.5.1.1.1 Settings

LinkOneNotificationService

The LinkOneNotificationService is configured through the **LinkOneNotificationService.exe.config** file located in the `~/Bin` directory

The LinkOneNotificationService reads the WebView configuration files in order to determine the library list as well as the sql server connection strings and therefore needs to be configured with the location of the WebView LinkOne folder for example-

```
<add key="Mincom.LinkOne.WebView.LinkOneDir" value="c:\inetpub\wwwroot\linkone" />
```

The email settings are configured in the LinkOneNotificationService.exe.config as follows:

```
<mailSettings>
  <smtp from="admin@acme.com">
    <network host="mail.acme.com" port="25" userName="fred" password="password" defaultCredentials="true" />
  </smtp>
</mailSettings>
```

Where:

admin@acme.com is the email address the notification emails will be from.

mail.acme.com is the smtp mail server address.

fred is the user to login to the mail server as.

password is the password to login with.

STATUS	SECURITY LEVEL	DOCUMENT ID	REV.	LANG.	PAGE
Approved	Public		A	en	22/29

To test that the email functionality is working, please configure the administrators email (or a test email address) using the "Mincom.LinkOne.WebView.TestEmailAddress". This email address will receive an email when the windows service is started.

Email Subject and Text

The text which is emailed when a book change is detected is configured by editing the **EmailBodyTemplate.txt** and **EmailSubjectTemplate.txt** files under the **~/App_Data** folder.

The EmailSubjectTemplate.txt file contains the text used for the Subject line of the email. It should be limited to 1 line of text.

In the EmailBodyTemplate.txt, several tokens are used

- **<UserName>** represents the username
- **<PublisherCode>** the publisher code
- **<BookCode>** the book code.

Note: After making modifications to the template files, you must restart the LinkOneNotification Service.

7.5.1.1.1.2 Tasks

The LinkOneNotificationService needs to be installed as a windows service by opening a command prompt where the LinkOneNotificationService.exe is located (linkone\bin by default) and executing the following command:

```
c:\Windows\Microsoft.NET\Framework\v2.0.50727\Installutil LinkOneNotificationService.exe
```

Note: In a multi LinkOne server environment (with shared content/books) the notification service should only be run on one server.

Once installed the service must be configured to run under an appropriate account which has write/create access to all configured library folders by using the Services snap-in under Windows.

To ensure stability of the notification system it is recommended that a daily scheduled task be configured under windows to restart the LinkOneNotificationService. An example would be to create a batch file containing the following commands and scheduled to run daily at midnight.

```
net stop LinkOneNotificationService
net start LinkOneNotificationService
```

7.6 User Management

User management involves configuring named user accounts for login, and assigning licenses, policies, and book access for each user. For bulk management of users, roles are used and assigned to users, with a role having the relevant licenses, policies, and book access to be shared by the users in that role.

Each user can log in and change their password through the **My Profile** web page. An administrator can also reset a user's password on the **Configuration > Users** web page.

The standard installation includes two user accounts:

- **User**
- **Admin**

Users are managed by the Microsoft Asp.net membership provider using a private membership database. For other user management options, such as Active Directory, refer to the LinkOne WebView Technical Reference.

7.6.1.1.1.1 Tasks

To view the configured users, log in as an administrator, and navigate to **Configuration > Users**. Each configured user consists of a unique name, and status information on last login and activity.

STATUS	SECURITY LEVEL	DOCUMENT ID	REV.	LANG.	PAGE
Approved	Public		A	en	23/29

To add a user, enter the details in the empty fields, and click **Add**.

To delete a user, click **Delete next** to the unwanted entry. A prompt will display confirming the request to delete. Click **OK**.

To modify a user, click on the row of the entry to modify and make the necessary changes. Click on **Save**.

When modifying a user's details, the following properties can be changed:

- **Roles:** A list of all roles to which the user belongs. All licenses, book access, note access, and policies are inherited from any roles to which the user is assigned, in addition to those added specifically to the user.
- **Licenses:** A list of relevant licenses required to open any books the user is allowed to view.
- **Allowed Books:** A list of books the user can browse and open. A user can be granted access to all books in the library, or a specific book, or a specific category of books, or all books from a specific publisher.
- **Allowed Notes:** A list of note categories that the user can view. A user can be granted access to all notes in the library, or a specific category of notes if a category is added.
- **Policies:** A user can be granted specific rights, which will override any rights from the roles to which the user is assigned.

7.7 Role Management

Roles are used to assign licenses, policies, and accessibility that are common to several users. Assigning a role to several users dispenses with the need to individually configure each user the same way. Multiple roles can be assigned to a user, and the user then inherits all licenses, policies, and accessibility for those roles.

The standard installation includes two roles:

- **Users**
- **Administrators:** a special role that is granted access to the Configuration and Reporting web pages

7.7.1.1.1 Tasks

To view the configured roles, log in as an administrator. Navigate to **Configuration > Roles**. Each role consists of a unique name, and status information on how many users are assigned to that role.

To add a role, enter the details in the empty fields, and click **Add**.

To delete a role, click **Delete** next to the unwanted entry. A prompt will display. Click **OK**.

To modify a role, click on the row of the entry to modify and make the necessary changes. Click **Save**.

When modifying a role's details, the following properties can be changed:

- **Users:** The users that have been assigned to this role and will inherit all licenses, book access, note access, and policies from the role.
- **Licenses:** The licenses to open books that users in the role have access to.
- **Allowed Books:** A role can be granted access to all books in the library, or a specific book, or a specific category of books, or all books from a specific publisher.
- **Allowed Notes:** A role can be granted access to all notes in the library, or a specific category of notes.
- **Policies:** A role can be granted user rights, which can also be overridden for a user by any specific rights granted to that user in the role.

7.8 Library Management

LinkOne WebView can display any LinkOne book that is found in an indexed LinkOne book library. Multiple libraries can be added to the Web site, and these libraries can be the same as those that are used for LinkOne WinView.

STATUS	SECURITY LEVEL	DOCUMENT ID	REV.	LANG.	PAGE
Approved	Public		A	en	24/29

LinkOne book libraries must be fully indexed to be able to view books contained within. This is not a requirement for LinkOne WinView, and so even if libraries are shared, they should be reindexed after they are added to LinkOne Web-View.

The order of a library is important when the same book is found in more than one library. In this case, the book that is found in the library that is higher in the library list will be used.

Each library has an indicator icon which shows:

- **Online:** An indexed library has been found and is being used.
- **Offline:** The library folder was not found.
- **Not Indexed:** A library was found, but no index was found.

7.8.1.1.1 Tasks

To view the configured libraries, log in as an administrator. Navigate to **Configuration > Libraries**. Each configured library consists of a unique library folder, an ordered position in the full library list, and an enabled state.

To add a library, enter the folder name in the empty folder field, and click **Add**. If the folder is on a network file share, then use its UNC path. If the folder is a local library, then drive letters are ok. In all cases, the Web site account (the built-in Network Service account) must have access to the library folder.

To delete a library, click **Delete** next to the unwanted entry. A prompt will display requesting confirmation to delete the library. Click **OK**.

To reindex a library, click **Reindex** next to the relevant entry, and wait for notification of reindexing complete. You must reindex a library after adding new books to that library.

To enable or disable all books in a library, click the **Enabled** check box of the relevant library to change the enabled state. Disabling a library will hide all books in that library from all users when browsing books.

To modify the order of a library in the list, click **Move Library Up** or **Move Library Down**.

7.8.1.1.2 Settings

As you browse the libraries and open books, LinkOne WebView caches content for speedier access. The content cache can be selected here, and defaults to a cache folder in the Web site.

Each book is decoded according to the web server code page, or the published book code page. The default code page for decoding can be chosen here, and defaults to the code page of the web server.

Make the required changes and click **Save**.

7.9 Note Management

Notes that are added to LinkOne books by their publisher are called **supplied notes**. You can also create your own **private notes** for private viewing, or **public notes** that other users can view.

Manage where these notes are stored using the note configuration web page. On this page, a single folder is chosen for storing all public notes. A single folder is also chosen for private notes, and the private notes are then stored in a sub-folder per user. The name of the user is embedded in the chosen private notes folder by including {0} where the user name will be substituted.

7.9.1.1.1 Tasks

To view the note configuration, log in as an administrator. Navigate to **Configuration > Notes**.

To choose a new folder for public notes, enter a folder name, and click **Save**.

To choose a new folder for private notes, enter a folder name including {0} for the user name substitution, and click **Save**.

STATUS	SECURITY LEVEL	DOCUMENT ID	REV.	LANG.	PAGE
Approved	Public		A	en	25/29

7.10 Selection List Management

Each login session requires a selection list for the user to add selected parts to. The user chooses their selection list type when they log in. The administrator determines the available selection lists, and how they behave.

The standard install contains the following sample selection lists.

- **Default:** A selection list that maps the common parts list fields to the selection list.
- **OCI:** A selection list that conforms to the Open Catalog Interface used by SAP.
- **SamplePricing:** A selection list that shows mock prices for parts added.

Selection lists may share their web pages to offer the same look and feel, by using the same location. Alternatively, a selection list location may be cloned into a new location, modified, and then added to the configured selection lists using the new location.

For more information on customizing selection lists, refer to the *LinkOne WebView Technical Reference*.

7.10.1.1.1 Tasks

To view the configuration of selection lists, log in as an administrator. Navigate to **Configuration > Selection Lists**. Each selection list consists of a unique name, a location in the Web site of where the web pages for the selection list are found, and a flag to indicate whether the selection list is stored between sessions for the user.

To add a selection list, enter the details in the empty fields, and click **Add**.

To delete a selection list, click **Delete** next to the unwanted entry. A prompt will display requesting confirmation of the delete request. Click **OK**.

To modify a selection list, click on the row of the entry to modify and make the necessary changes. Click **Save** when complete.

7.11 Assigning Security Keys

LinkOne WebView will open any book not locked by its publisher. When a publisher locks a book, the matching security key must be used to unlock that book's content. Locks may be placed on entire books, on any pages in a book, on parts list layouts, or on book searches.

Security Keys can be assigned to a specific user or to a role.

7.11.1.1.1 Tasks

To assign a Security Key to a user:

1. Login as an administrator. Navigate to **Configuration > Users**.
2. Select a user by clicking on the row of the entry to modify.
3. Select the **Licenses** details.
4. Enter a new Security Key in the empty Security Key field, click **Add**.

To assign a Security Key to a role:

1. Login as an administrator. Navigate to **Configuration > Roles**.
2. Select a role by clicking on the row of the entry to modify.
3. Select the **Licenses** details.
4. Enter a new Security Key in the empty Security Key field, click **Add**.

7.12 Assigning Book Access

An administrator determines what books each user or role can browse and open.

STATUS	SECURITY LEVEL	DOCUMENT ID	REV.	LANG.	PAGE
Approved	Public		A	en	26/29

The full set of books available for browsing comes from the list of all configured and enabled book libraries. Each user can be allowed to browse the full set of books, or a reduced set by allowing access with a combination of:

- All books from a specific publisher
- All books from a specific category of books from a publisher
- A specific book

This access can be assigned to a specific user, or to a role shared by several users.

7.12.1.1.1.1 Tasks

To assign access to a user:

1. Log in as an administrator. Navigate to **Configuration > Users**.
2. Select a user by clicking on the row of the entry to modify.
3. Select the **Allowed Books** details. Perform one of the following:
 - a. Select **All Books**;
 - b. Click on **Select Book** and select a book, a category, or a publisher from the library, then click **OK**, then click **Add**.

To assign access to a role:

1. Log in as an administrator. Navigate to **Configuration > Roles**.
2. Select a role by clicking on the row of the entry to modify.
3. Select the **Allowed Books** details. Perform one of the following:
 - a. Select **All Books**;
 - b. Click on **Select Book** and select a book, a category, or a publisher from the library, then click **OK**, then click **Add**.

7.13 Assigning Note Access

An administrator determines what notes each user or role can view.

The full set of notes available for viewing comes from the list of all supplied, private, and public notes found for the current book view. Each user can be allowed to view the full set of notes, or a reduced set by allowing access with a combination of:

- All notes from a specific category of notes

This access can be assigned to a specific user or to a role shared by several users.

7.13.1.1.1.1 Tasks

To assign access to a user:

1. Log in as an administrator. Navigate to **Configuration > Users**.
2. Select a user by clicking on the row of the entry to modify.
3. Select the **Allowed Notes** details.
4. Either select **All Notes** or enter a note category code to grant access to notes in a specific category, and click **Add**.

To assign access to a role:

1. Log in as an administrator. Navigate to **Configuration > Roles**.
2. Select a role by clicking on the row of the entry to modify.
3. Select the **Allowed Notes** details.
4. Either select **All Notes** or Enter a note category code to grant access to notes in a specific category, and click **Add**.

STATUS	SECURITY LEVEL	DOCUMENT ID	REV.	LANG.	PAGE
Approved	Public		A	en	27/29

7.14 Assigning Policies

Policies are used to control access to certain features of LinkOne WebView. The same policies are available for each role and each user, and when enabled on a role, are inherited by users with that role.

A typical user would probably not have any policies enabled, but an administrator would typically have all policies enabled.

The policies that are supplied with the standard installation:

7.14.1.1.1 Allow Category Writing

Enabling this policy allows the assigned user or role to create and modify note categories in the book viewing web page.

7.14.1.1.2 Allow Public Note Writing

Enabling this policy allows the assigned user or role to create and modify notes that can be viewed publicly in the book viewing web page.

7.14.1.1.3 Allow Supplied Note Writing

Enabling this policy allows the assigned user or role to create and modify notes that are supplied with publishers, books, or pages, that can be viewed publicly in the book viewing web page.

7.14.1.1.4 Allow Private Note Writing

Enabling this policy allows the assigned user or role to create and modify notes that are viewed only by themselves in the book viewing web page.

7.14.1.1.5 Allow Multilingual Note Writing

Enabling this policy allows the assigned user or role to create and modify note translations for other languages besides their current book language.

7.14.1.1.6 Allow Selection List Sharing

Enabling this policy allows the assigned user to see selection lists from other users that are in at least one of the roles the assigned user is in.

7.14.1.1.7 Disable changing Password

Enabling this policy stops the assigned user or users in the assigned role from changing the password from the 'My Profile' dialog.

8 Additional Information

8.1 Listing of related documents

Ref #	Document Kind, Title	Document No
	LinkOne WebView 3.x Release Notes	
	LinkOne WebView 3.24 and earlier Release Notes	
	LinkOne WebView Technical Reference	
	LinkOne WebView User Online Help	

STATUS	SECURITY LEVEL	DOCUMENT ID	REV.	LANG.	PAGE
Approved	Public		A	en	28/29

Ref #	Document Kind, Title	Document No
-------	----------------------	-------------

STATUS	SECURITY LEVEL	DOCUMENT ID	REV.	LANG.	PAGE
Approved	Public		A	en	29/29
